



Middle TN Commercial Real Estate Experts:



JP Powell
Managing Broker
c 615.533.5682
o 615.824.7072

jpowell@southeasterncommercial.net



Mark McDaniel
Affiliate Broker
c 615.456.2771
o 615.824.7072

mmcdaniel@southeasterncommercial.net



FOR LEASE



139 Maple Row Blvd, Hendersonville, TN 37075

Lease Rate: \$18.00/sf NNN

CAM: \$4.00/sf

Available Space: 1,390 sf & 1,944 sf (3,335 sf - Full Building)

Located just off of Indian Lake Road in the Maple Row Professional Park, in the heart of Hendersonville. Connection to the new Kroger plaza, minutes from restaurants, shopping and Hendersonville High School.

- Ample parking for visitors
- Convenient Hendersonville location, without the traffic of being directly on Indian Lake
- Option to divide into 2 suites
- Suite 102 (1,390 sf) - 7 Offices, 1 bath & reception
- Suite 100 (1,944 sf)- 2 Large, private offices, open areas for cubicles, conference room, 2 bath, breakroom & reception

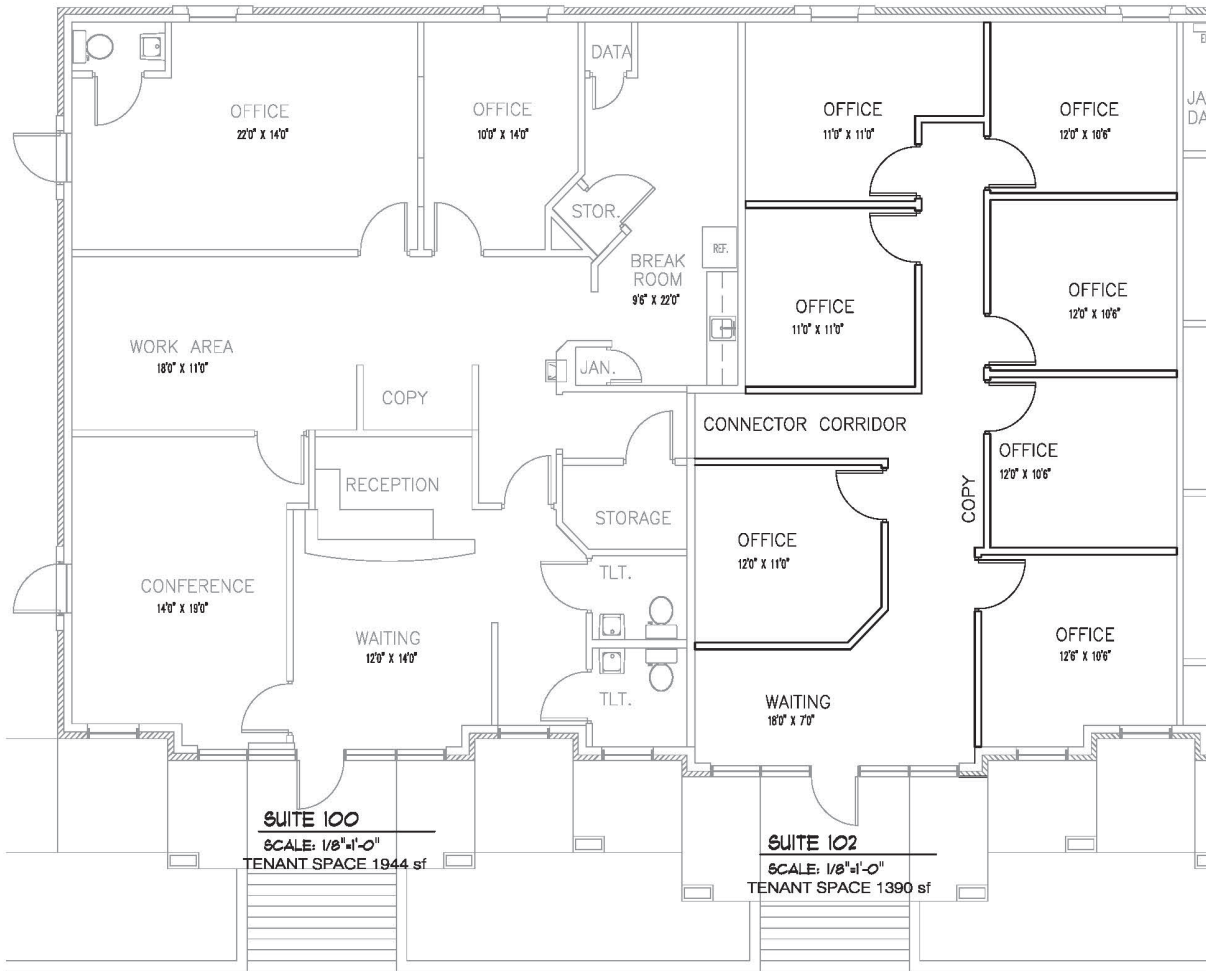
Demographics:

	1 mile	3 mile	5 mile
• Population	6,229	46,289	85,214
• Households	2,487	18,521	33,451
• Avg HH Income	\$60,029	\$63,197	\$69,811

Demographic source: costar.com

Indian Lake Boulevard AADT: 30,000+ cars per day

- County: Sumner
- MSA: Nashville-Davidson-Sumner, TN



Southeastern Commercial Properties is a full service real estate firm. From retail, office and Industrial leasing, sales and build to suit, to land and entitlement consulting, we can get any job done.

Real Estate Services

- Acquisition and disposition services for Raw Land, Distressed Properties, For Lease, and For Sale Properties, Tenant Representation, Transaction Management and Lease Administration.

Construction:

- Tenant buildouts Concept to completion, we Design and Build Commercial Office Buildings and Retail Strip Centers. Repositioning of Assets and Master Planning of Communities.

"We'll help you find the right place, and we'll make sure that it fits your business and budget."