



# Demographic and Income Comparison Profile

166 E Main St, Hendersonville, Tennessee, 37075  
Rings: 1, 3, 5 mile radii

Prepared by Esri  
Latitude: 36.30692  
Longitude: -86.60786

	1 mile	3 miles	5 miles
<b>Census 2010 Summary</b>			
Population	4,477	41,526	77,420
Households	1,803	16,749	30,916
Families	1,234	11,421	21,579
Average Household Size	2.48	2.47	2.50
Owner Occupied Housing Units	1,318	11,486	21,864
Renter Occupied Housing Units	485	5,263	9,052
Median Age	43.9	38.9	39.5
<b>2019 Summary</b>			
Population	4,961	48,540	91,085
Households	1,999	19,555	36,142
Families	1,344	13,210	25,138
Average Household Size	2.48	2.48	2.52
Owner Occupied Housing Units	1,495	13,785	26,039
Renter Occupied Housing Units	503	5,770	10,103
Median Age	45.7	41.1	41.6
Median Household Income	\$58,742	\$64,451	\$70,104
Average Household Income	\$84,648	\$90,773	\$95,948
<b>2024 Summary</b>			
Population	5,247	51,530	97,485
Households	2,114	20,729	38,555
Families	1,412	13,956	26,779
Average Household Size	2.48	2.48	2.52
Owner Occupied Housing Units	1,597	14,858	28,264
Renter Occupied Housing Units	517	5,871	10,292
Median Age	46.4	41.8	42.4
Median Household Income	\$63,073	\$70,620	\$77,339
Average Household Income	\$93,231	\$101,161	\$107,215
<b>Trends: 2019-2024 Annual Rate</b>			
Population	1.13%	1.20%	1.37%
Households	1.12%	1.17%	1.30%
Families	0.99%	1.10%	1.27%
Owner Households	1.33%	1.51%	1.65%
Median Household Income	1.43%	1.84%	1.98%

Source: U.S. Census Bureau, Census 2010 Summary File 1. Esri forecasts for 2019 and 2024.

February 26, 2020



# Demographic and Income Comparison Profile

166 E Main St, Hendersonville, Tennessee, 37075  
Rings: 1, 3, 5 mile radii

Prepared by Esri  
Latitude: 36.30692  
Longitude: -86.60786

2019 Households by Income	1 mile		3 miles		5 miles	
	Number	Percent	Number	Percent	Number	Percent
<\$15,000	136	6.8%	1,286	6.6%	2,323	6.4%
\$15,000 - \$24,999	150	7.5%	1,276	6.5%	2,075	5.7%
\$25,000 - \$34,999	173	8.7%	1,416	7.2%	2,400	6.6%
\$35,000 - \$49,999	317	15.9%	2,565	13.1%	4,332	12.0%
\$50,000 - \$74,999	486	24.3%	4,769	24.4%	8,077	22.3%
\$75,000 - \$99,999	259	13.0%	2,612	13.4%	5,246	14.5%
\$100,000 - \$149,999	242	12.1%	3,049	15.6%	6,191	17.1%
\$150,000 - \$199,999	101	5.1%	1,082	5.5%	2,442	6.8%
\$200,000+	134	6.7%	1,501	7.7%	3,056	8.5%
Median Household Income	\$58,742		\$64,451		\$70,104	
Average Household Income	\$84,648		\$90,773		\$95,948	
Per Capita Income	\$35,071		\$36,565		\$38,021	

2024 Households by Income	1 mile		3 miles		5 miles	
	Number	Percent	Number	Percent	Number	Percent
<\$15,000	120	5.7%	1,098	5.3%	2,014	5.2%
\$15,000 - \$24,999	132	6.2%	1,097	5.3%	1,830	4.7%
\$25,000 - \$34,999	162	7.7%	1,304	6.3%	2,225	5.8%
\$35,000 - \$49,999	317	15.0%	2,516	12.1%	4,216	10.9%
\$50,000 - \$74,999	518	24.5%	4,963	23.9%	8,293	21.5%
\$75,000 - \$99,999	287	13.6%	2,858	13.8%	5,674	14.7%
\$100,000 - \$149,999	294	13.9%	3,679	17.7%	7,362	19.1%
\$150,000 - \$199,999	134	6.3%	1,458	7.0%	3,267	8.5%
\$200,000+	150	7.1%	1,755	8.5%	3,675	9.5%
Median Household Income	\$63,073		\$70,620		\$77,339	
Average Household Income	\$93,231		\$101,161		\$107,215	
Per Capita Income	\$38,694		\$40,714		\$42,340	

**Data Note:** Income is expressed in current dollars.

**Source:** U.S. Census Bureau, Census 2010 Summary File 1. Esri forecasts for 2019 and 2024.



# Demographic and Income Comparison Profile

166 E Main St, Hendersonville, Tennessee, 37075  
Rings: 1, 3, 5 mile radii

Prepared by Esri  
Latitude: 36.30692  
Longitude: -86.60786

2010 Population by Age	1 mile		3 miles		5 miles	
	Number	Percent	Number	Percent	Number	Percent
Age 0 - 4	247	5.5%	2,572	6.2%	4,691	6.1%
Age 5 - 9	276	6.2%	2,818	6.8%	5,284	6.8%
Age 10 - 14	303	6.8%	2,937	7.1%	5,587	7.2%
Age 15 - 19	281	6.3%	2,795	6.7%	5,076	6.6%
Age 20 - 24	195	4.4%	2,271	5.5%	3,847	5.0%
Age 25 - 34	451	10.1%	5,104	12.3%	9,236	11.9%
Age 35 - 44	550	12.3%	6,019	14.5%	11,461	14.8%
Age 45 - 54	650	14.5%	6,278	15.1%	11,993	15.5%
Age 55 - 64	601	13.4%	5,029	12.1%	9,957	12.9%
Age 65 - 74	481	10.7%	3,276	7.9%	6,082	7.9%
Age 75 - 84	304	6.8%	1,706	4.1%	3,053	3.9%
Age 85+	140	3.1%	720	1.7%	1,151	1.5%

2019 Population by Age	1 mile		3 miles		5 miles	
	Number	Percent	Number	Percent	Number	Percent
Age 0 - 4	244	4.9%	2,652	5.5%	4,907	5.4%
Age 5 - 9	268	5.4%	2,859	5.9%	5,491	6.0%
Age 10 - 14	301	6.1%	3,164	6.5%	6,126	6.7%
Age 15 - 19	289	5.8%	3,015	6.2%	5,732	6.3%
Age 20 - 24	255	5.1%	2,771	5.7%	4,839	5.3%
Age 25 - 34	519	10.5%	6,147	12.7%	10,839	11.9%
Age 35 - 44	560	11.3%	6,062	12.5%	11,667	12.8%
Age 45 - 54	630	12.7%	6,712	13.8%	13,020	14.3%
Age 55 - 64	683	13.8%	6,549	13.5%	12,649	13.9%
Age 65 - 74	600	12.1%	4,969	10.2%	9,516	10.4%
Age 75 - 84	407	8.2%	2,563	5.3%	4,584	5.0%
Age 85+	205	4.1%	1,076	2.2%	1,716	1.9%

2024 Population by Age	1 mile		3 miles		5 miles	
	Number	Percent	Number	Percent	Number	Percent
Age 0 - 4	254	4.8%	2,798	5.4%	5,219	5.4%
Age 5 - 9	277	5.3%	2,908	5.6%	5,613	5.8%
Age 10 - 14	303	5.8%	3,162	6.1%	6,235	6.4%
Age 15 - 19	295	5.6%	3,062	5.9%	5,969	6.1%
Age 20 - 24	258	4.9%	2,888	5.6%	4,959	5.1%
Age 25 - 34	582	11.1%	6,673	12.9%	11,715	12.0%
Age 35 - 44	568	10.8%	6,297	12.2%	12,380	12.7%
Age 45 - 54	643	12.3%	6,628	12.9%	13,042	13.4%
Age 55 - 64	717	13.7%	6,851	13.3%	13,262	13.6%
Age 65 - 74	636	12.1%	5,659	11.0%	10,888	11.2%
Age 75 - 84	476	9.1%	3,324	6.5%	6,142	6.3%
Age 85+	239	4.6%	1,279	2.5%	2,060	2.1%

Source: U.S. Census Bureau, Census 2010 Summary File 1. Esri forecasts for 2019 and 2024.



# Demographic and Income Comparison Profile

166 E Main St, Hendersonville, Tennessee, 37075  
Rings: 1, 3, 5 mile radii

Prepared by Esri  
Latitude: 36.30692  
Longitude: -86.60786

2010 Race and Ethnicity	1 mile		3 miles		5 miles	
	Number	Percent	Number	Percent	Number	Percent
White Alone	4,063	90.8%	37,083	89.3%	68,479	88.5%
Black Alone	216	4.8%	2,402	5.8%	5,176	6.7%
American Indian Alone	9	0.2%	133	0.3%	249	0.3%
Asian Alone	50	1.1%	571	1.4%	1,176	1.5%
Pacific Islander Alone	0	0.0%	22	0.1%	48	0.1%
Some Other Race Alone	62	1.4%	539	1.3%	854	1.1%
Two or More Races	77	1.7%	776	1.9%	1,439	1.9%
Hispanic Origin (Any Race)	187	4.2%	1,592	3.8%	2,597	3.4%

2019 Race and Ethnicity	Number		Percent		Number		Percent	
	Number	Percent	Number	Percent	Number	Percent	Number	Percent
White Alone	4,347	87.6%	41,796	86.1%	77,940	85.6%		
Black Alone	310	6.2%	3,551	7.3%	7,213	7.9%		
American Indian Alone	11	0.2%	163	0.3%	321	0.4%		
Asian Alone	76	1.5%	882	1.8%	1,859	2.0%		
Pacific Islander Alone	0	0.0%	30	0.1%	71	0.1%		
Some Other Race Alone	97	2.0%	863	1.8%	1,346	1.5%		
Two or More Races	119	2.4%	1,254	2.6%	2,335	2.6%		
Hispanic Origin (Any Race)	283	5.7%	2,513	5.2%	4,072	4.5%		

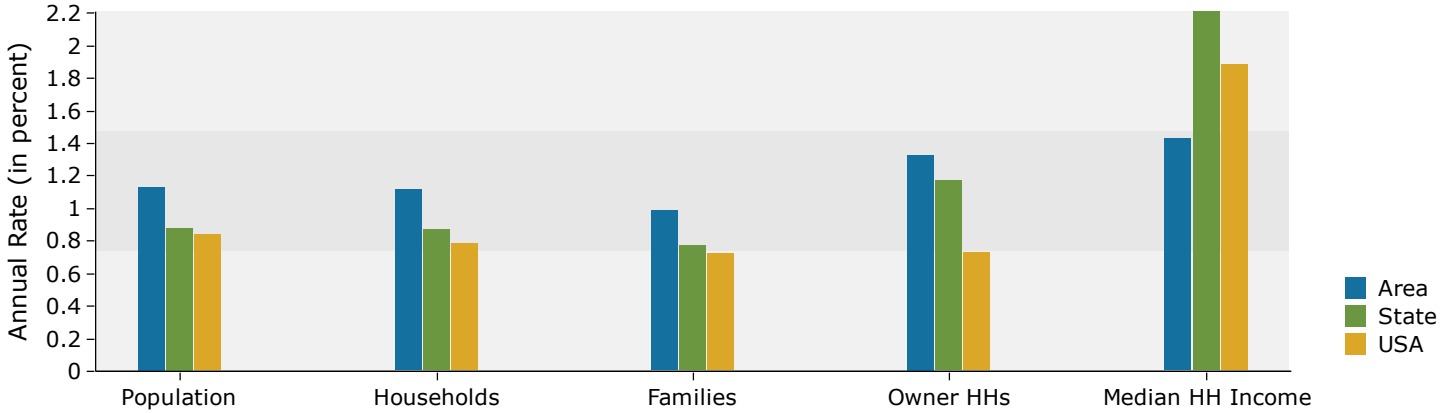
  

2024 Race and Ethnicity	Number		Percent		Number		Percent	
	Number	Percent	Number	Percent	Number	Percent	Number	Percent
White Alone	4,510	86.0%	43,464	84.3%	81,782	83.9%		
Black Alone	371	7.1%	4,227	8.2%	8,472	8.7%		
American Indian Alone	12	0.2%	177	0.3%	351	0.4%		
Asian Alone	97	1.8%	1,109	2.2%	2,366	2.4%		
Pacific Islander Alone	0	0.0%	36	0.1%	87	0.1%		
Some Other Race Alone	115	2.2%	1,023	2.0%	1,613	1.7%		
Two or More Races	142	2.7%	1,494	2.9%	2,815	2.9%		
Hispanic Origin (Any Race)	344	6.6%	3,059	5.9%	5,006	5.1%		

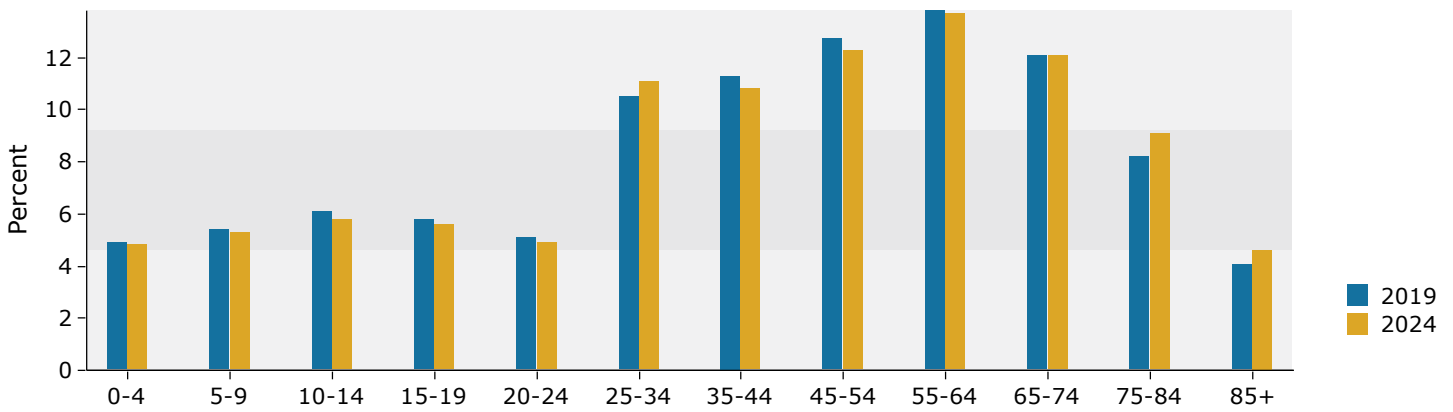
Source: U.S. Census Bureau, Census 2010 Summary File 1. Esri forecasts for 2019 and 2024.

## 1 mile

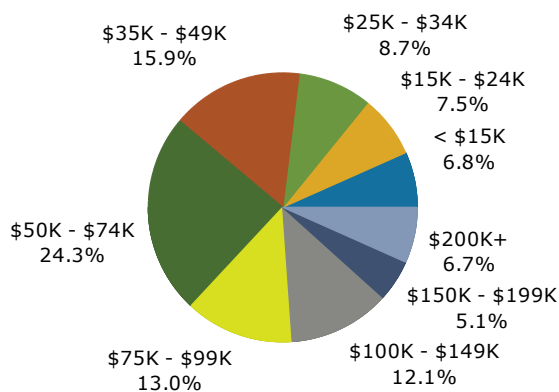
### Trends 2019-2024



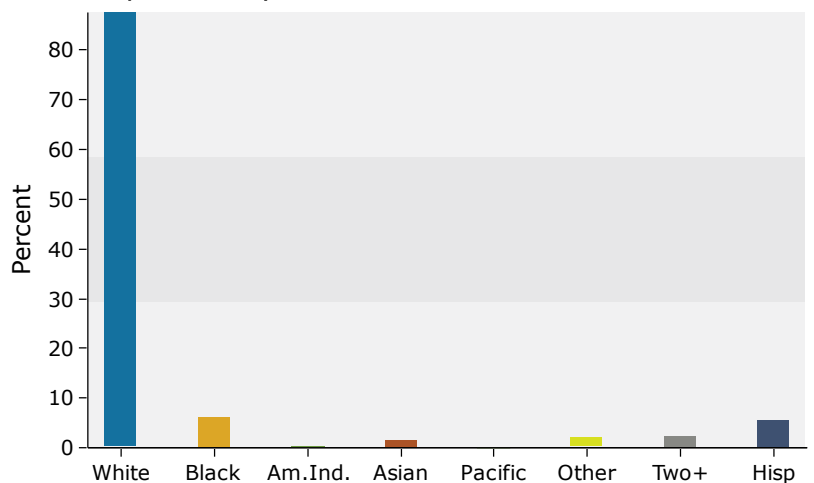
### Population by Age



### 2019 Household Income



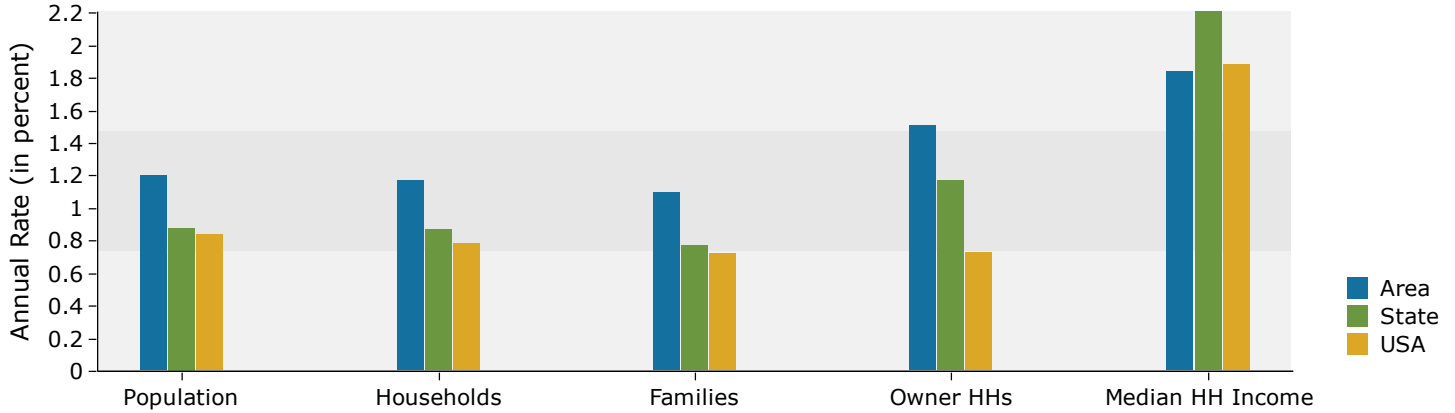
### 2019 Population by Race



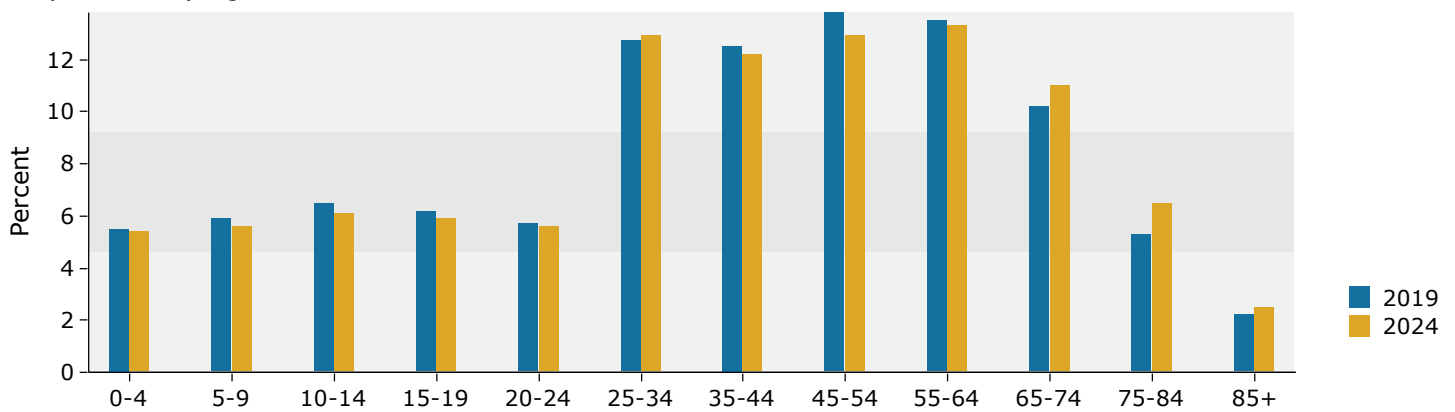
Source: U.S. Census Bureau, Census 2010 Summary File 1. Esri forecasts for 2019 and 2024.

### 3 miles

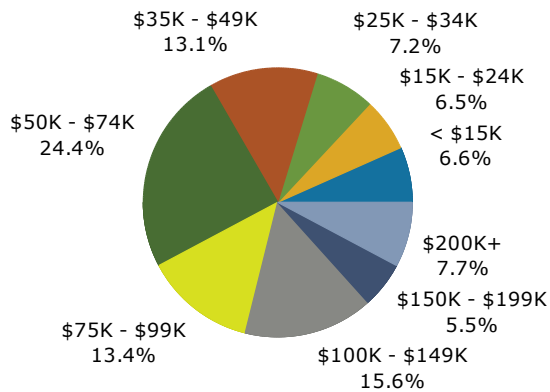
#### Trends 2019-2024



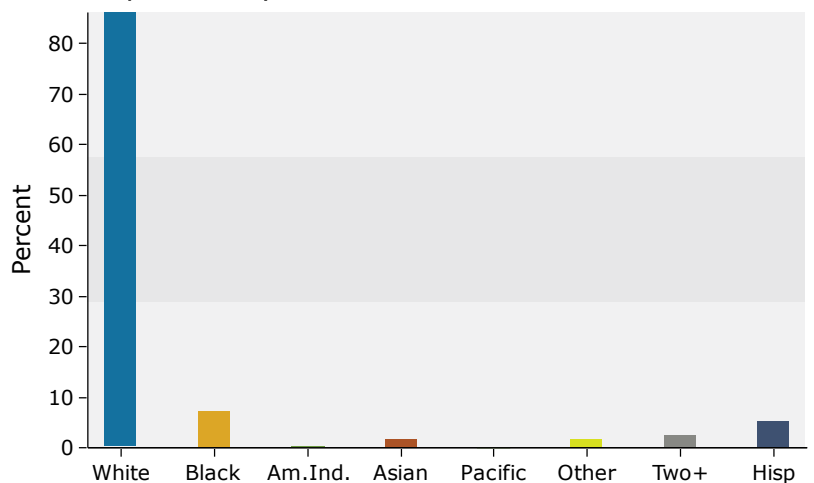
#### Population by Age



#### 2019 Household Income



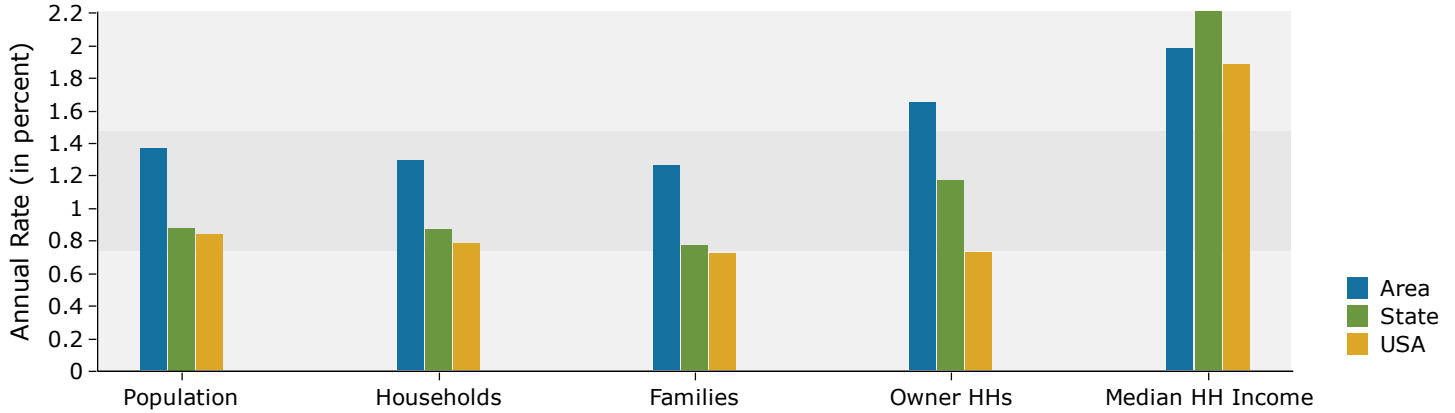
#### 2019 Population by Race



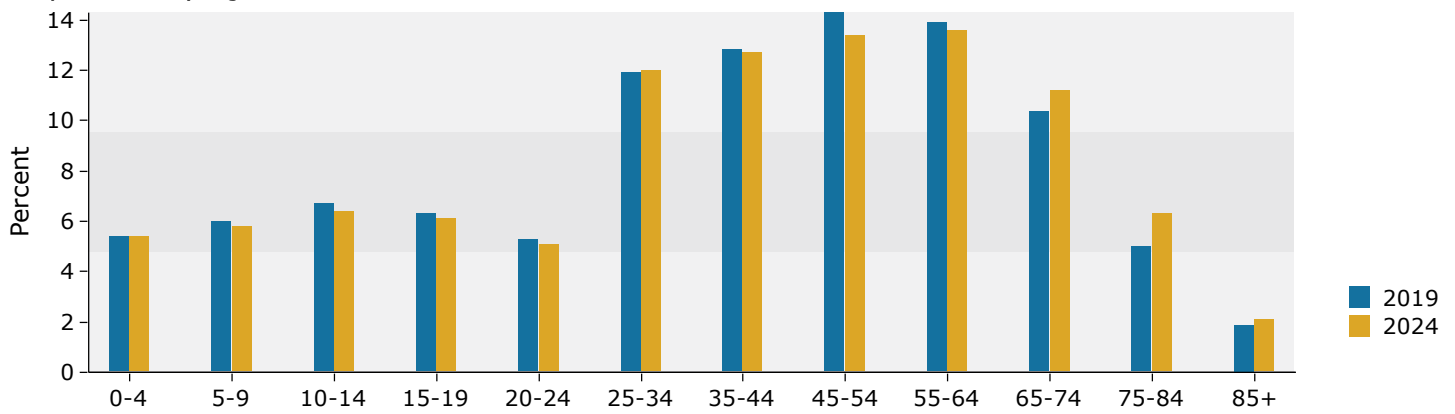
Source: U.S. Census Bureau, Census 2010 Summary File 1. Esri forecasts for 2019 and 2024.

## 5 miles

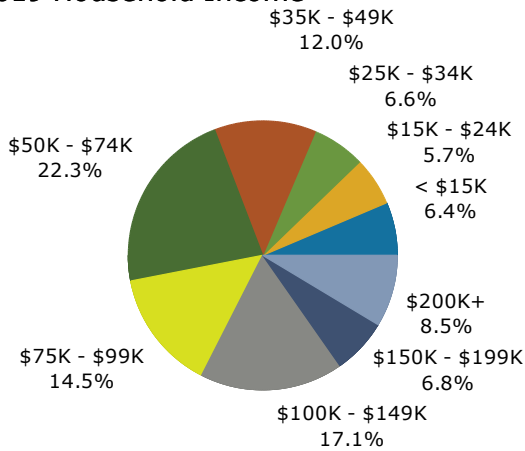
### Trends 2019-2024



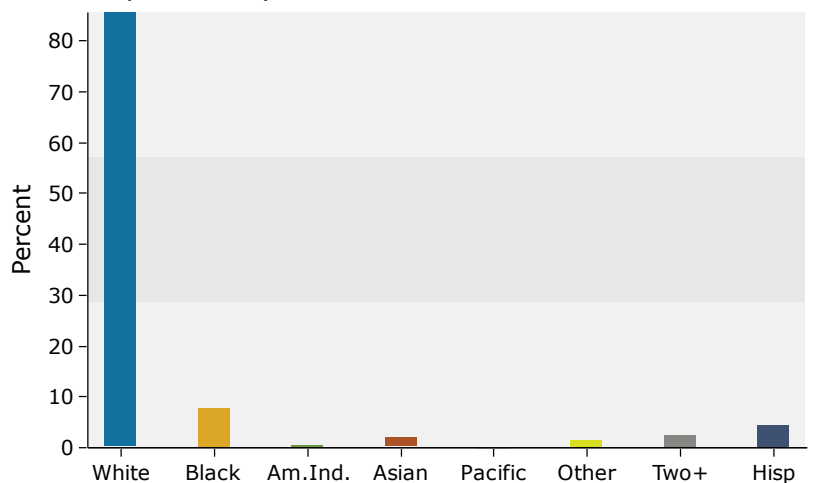
### Population by Age



### 2019 Household Income



### 2019 Population by Race



Source: U.S. Census Bureau, Census 2010 Summary File 1. Esri forecasts for 2019 and 2024.